

SAILING INSTRUCTIONS

INSHORE CIRCLES 1, 2 & 3

2015 Sperry Charleston Race Week - April 16-19, 2015

Organizing Authority: Charleston Ocean Racing Association

1 RULES

- 1.1 The regatta will be governed by the rules as defined in *The Racing Rules of Sailing*.
- 1.2 The Equipment Rules of Sailing will apply.
- 1.3 US Sailing Prescriptions to RRS 60, 63.2 and 63.4 will not apply.
- 1.4 The protest committee may impose suitable penalties, other than disqualification, for violations of the Class Rules, or other non Part 2 rules. This changes RRS 64.1.
- 1.5 For the J/70 class, invoke I.1 of Part 3 of the Class Rules:
I.3 SPARE GENNAKER: One spare gennaker (that meets the requirements of C.10, G.2 and G.5) may be presented for measurement and registration for an event, and carried aboard, but shall not be used during an event except when the primary gennaker has been lost or damaged to the point where it cannot be effectively repaired while afloat.
- 1.6 The International Audi Melges 20 Class Event Rules Part III (Section 1) will apply, except Section 1.5.
- 1.7 If there is a conflict between languages the English text will take precedence.

2 NOTICES TO COMPETITORS

- 2.1 Notices to competitors will be posted on the official notice board(s) located in the Race Village at Charleston Harbor Resort and Marina (CHRM) on the terrace.
- 2.2 Any questions concerning the notice of race, these sailing instructions, scoring, or any other issue shall be submitted in writing to Race Week Headquarters on the forms provided there. Replies will be posted on the official notice board(s).

3 CHANGES IN THE SAILING INSTRUCTIONS

- 3.1 Any change to the sailing instructions will be posted on the official notice board(s) before 0900 on the day it will take effect, except that any change to the schedule of races will be posted by 2000 on the day before it will take place.
- 3.2 For an on the water change to the sailing instructions: "L" flag shall be displayed with class flag, if appropriate. The change will be announced on the designated VHF channel. This changes RRS Race Signals.

4 SIGNALS MADE ASHORE

- 4.1 Signals made ashore will be displayed at the flagpole located on the dock outside the marina office.
- 4.2 When flag "L" is displayed alone ashore, it means that a notice affecting all competitors has been posted. When flag "L" is displayed over numeral pennant(s) it means that the notice applies only to those sailing on the circles(s) corresponding to numeral pennant(s) displayed. This changes RRS Race Signals.
- 4.3 When flag "AP" is displayed ashore, "1 minute" is replaced with "not less than 30 minutes". This changes RRS Race Signals.

5 SCHEDULE OF RACES & EVENTS

- 5.1 **Thursday, April 16**
 - 1200-1700 Registration
 - 1200-1400 Circle 3 - Informal Practice Starts offered by Quantum for Audi Melges 20, Melges 24, and Vipers on VHF 71
 - 1400-1600 Circle - 2 Informal Practice Starts offered by Quantum for J70's on VHF 69
 - 1700-1800 Skippers Meeting (Pavilion)
 - 1800 Local Knowledge Talk - Mitch Hall & Ed Baird (Main stage)

- 1900 Brian Carlin Replays his Vestas Wind's grounding
- 1800-2100 Opening Beach Party, Gosling's Rum, Tacos, Wine Tasting, Live Music

Friday, April 17

- 0730 US Sailing Espresso Bar
- 0830 Harbor Start for offshore circles 4 & 5
- 0930 Pursuit Class - first warning signal
- 1030 Offshore (Circles 4 & 5) - first warning signal
- 1100 Inshore (Circles 1, 2 & 3) - first warning signal
- 1800 Friday debrief by Ed Baird with video by Keith Brash presented by Quantum
- 1800-2100 Daily Awards, Beach Party, Beach Buffet, Goslings Rum, Beer Bar, Wine Tasting, Live Music

Saturday, April 18

- 0730 US Sailing Espresso Bar
- 0830 Harbor Start for offshore circles 4 & 5
- 0930 Pursuit Class - first warning signal
- 1030 Offshore (Circles 4 & 5) - first warning signal
- 1100 Inshore (Circles 1, 2 & 3) - first warning signal
- 1700-1900 SCRW Owner's Reception presented by Quantum
- 1800 Saturday debrief by Ed Baird with video by Keith Brash presented by Quantum
- 1900 America's Cup 35 Update by Tucker Thompson and Andrew Campbell (Main Stage)
- 1800-2100 Daily Awards, Beach Party, Goslings Rum, Beer Bar, Wine Tasting, Video DJ

Sunday, April 19

- 0730 US Sailing Espresso Bar
- 0830 Harbor Start for offshore circles 4 & 5
- 0930 Pursuit Class - first warning signal
- 1030 Offshore (Circles 4 & 5) - first warning signal
- 1100 Inshore (Circles 1, 2 & 3) - first warning signal
- 1400-1800 Beach Party
- 1530 Sunday debrief by Ed Baird with video by Keith Brash presented by Quantum
- 1600-1800 Awards Ceremony, Chili, Beer Bar, Wine Tasting

5.2 Ten races (10) are scheduled. One (1) race for each class shall be completed to constitute a regatta for that class.

5.3 The race committee may run up to, but not more than, four (4) races in a single day.

5.4 Races that are postponed or abandoned for the day may be re-sailed unless it is the final day of racing.

5.5 To alert boats that a race or sequence of races will begin soon, the orange starting line Flag will be displayed with one sound at least five minutes before a warning signal is made.

5.6 On the last day of the regatta no warning signal will be made after 1400.

6 CLASS FLAGS, BOW NUMBERS STICKERS, & SAIL NUMBERS

- 6.1 Class flag/fleet ribbon designations will be posted on the official notice board at Race Headquarters not later than 1800 Thursday, April 16, 2015.
- 6.2 Each boat will be assigned a bow number. These bow numbers shall be displayed on both sides of the bow.
- 6.3 All boats shall display only the sail numbers under which she has entered, unless prior written approval is obtained from the race committee and posted on the official notice board.
- 6.4 All J/70's shall conspicuously display a fleet ribbon attached to the backstay, as provided by the OA.

7 RACING AREA

7.1 The racing areas are shown in "Circle Locations" in "Illustration B."

7.2 The racing area will be in the Charleston Harbor.

8 THE COURSES

8.1 The diagrams in Illustration B illustrate the courses, including the approximate angle between legs, the order in which the marks are to be passed and side on which a mark is to be left. 8.2 Numerical pennants will be displayed to signify the specific course.

8.3 The race committee will broadcast the course, bearing and distance information before the warning signal. Failure to broadcast or to receive this notification shall not constitute grounds for granting redress. This changes RRS 62.1(a).

8.4 If one of the leeward gate marks is missing and not replaced by a mark boat in its place displaying flag "M" and making repetitive sounds, boats shall sail around the existing leeward mark leaving it to port.

9 MARKS

9.1 **The marks for Circle 1 will be:** Mark 1 is a yellow tetrahedron; Mark O is an offset mark white ball; Marks 2A and 2B are yellow tetrahedrons; The start and finish marks will be race committee boats or an inflatable buoy. New mark 1 is an orange tetrahedron.

9.2 **The marks for Circle 2 will be:** Mark 1 is a green tetrahedron; Mark O is an offset mark orange ball; Marks 2A and 2B are green tetrahedrons; The start and finish marks will be race committee boats or an inflatable buoy; New mark 1 is a red tetrahedron.

9.3 **The marks for Circle 3 will be:** Mark 1 is an orange tetrahedron; Mark O is a white ball; Marks 2A and 2B are orange tetrahedrons.; The start and finish marks will be race committee boats or an inflatable buoy; New mark 1 is a yellow tetrahedron.

9.4 A race committee boat signaling a change of leg of the course is a mark as provided in instruction 14.2.

10 CHECK IN

10.1 Before the first warning signal of each day, all boats shall sail past the stern of the signal boat on starboard tack and check in by hailing their bow number. They shall continue to do so until their bow number is verbally acknowledged by the race committee.

10.2 Boats failing to check in accordance with 10.1 will be given a scoring penalty equal to 20% of the number of boats entered in that class without a hearing. (This changes RRS A5). This will apply to each boat's first race of the day.

11. THE START

11.1 Race will be started by using RRS 26.

11.2 The starting line will be between the staffs displaying an orange flag on the starboard end signal boat and the port end starting mark boat. In the event that the port end mark boat is not on station, it will be replaced by an inflatable mark. The course side of the inflatable mark will define the line.

11.3 Boats whose warning signal has not been made shall avoid the starting area during the starting sequence for other races. The starting area is defined as 100 yards in all directions from the starting line.

11.4 A boat starting later than 4 minutes after their starting signal will be scored Did Not Start (DNS) without a hearing. This changes rule A4.

12 RECALLS

12.1 Individual recalls and boats disqualified under RRS 30.3 will be broadcast on designated VHF channel using bow/sail numbers. This is in addition to and changes RRS 29.1 and 30.3.

12.2 The RC will broadcast the bow/sail numbers of all boats observed to be OCS at the start twice; it will not alter the list based on a boat's actions subsequent to the start.

12.3 Failure of the RC to make a broadcast or to time it accurately or the order of boat(s) hailed will not be grounds for granting redress. This changes RRS 62.1(a).

13 CHANGE OF COURSE BEFORE THE START

13.1 If there is a significant wind shift before a preparatory signal, the race committee may signal a change of course for classes/fleets not yet started.

13.2 At the preparatory signal, flag "C" will be displayed on the signal boat with repetitive sound signals and will remain displayed until the preparatory signal is lowered. The first mark will be the new/change mark. The bearing to the mark will be posted and announced over the designated VHF channel.

14 CHANGE OF THE NEXT LEG OF THE COURSE

14.1 To change the next leg of the course, the race committee will lay a new mark (or move the finishing line) and remove the original mark as soon as practical. When in a subsequent change a new mark is replaced, it will be replaced by an original mark.

14.2 Except at a gate, boats shall pass between the race committee boat signaling change of the next leg and the nearby mark, leaving the mark to port and the race committee boat to starboard. This changes RRS 28.

14.3 A signal board for the classes/fleets for which the change of course applies will be displayed along with flag "C." If no classes/fleets are displayed on a signal board, the change applies to all classes. This changes RRS Race Signals.

14.4 The race committee will adjust the angle of a gate without making any signals.

14.5 The race committee will attempt to broadcast any course changes over the designated VHF channel. Failure of a boat to hear such notification or failure to broadcast will not be grounds for granting redress. This changes RRS 62.1.

14.6 A course change for the final leg of a race will be signaled by a race committee boat in the vicinity of the last rounding mark(s). It will display code flag "C" over "Q" and a signal board with the direction and/or leg length change to the finish line and make repetitive sounds. This signal (C over Q) applies only to the boats sailing their final (finishing) leg. The change will be signaled before the leading boat of a class/fleet has begun the leg, although the finish line may not yet be in position. This changes RRS Race Signals.

15 THE FINISH

15.1 For windward finishes, the finishing line will be between a staff displaying an orange flag on the finish boat and a staff displaying an orange flag on the nearby finish boat.

15.2 For downwind finishes, the finish will be on the opposite side of the signal boat from the starting line between a staff displaying an orange flag on signal boat and a staff displaying an orange flag on a nearby finish boat.

15.3 If the race committee intends to start another race on the same day, it will display the code flag "R" (with no sound) while boats are finishing. This changes RRS Race Signals.

15.4 In the interest of starting another race in a timely fashion on multiple race days, the race committee may offer a finish position to the last finishers in a class, provided that the positions can be determined in a reasonable manner.

16 PENALTY SYSTEM

16.1 PENALTY TURNS:

16.1.1 Audi Melges 20 - RRS 44.1(a) and 44.2 are changed as so the penalty shall be a one turn penalty including one tack and one gybe.

16.1.2 All other classes - The first two sentences of Rule 44.1 are changed to: "A boat may take a One-Turn Penalty when it may have broken a rule of Part 2 or rule 31 while racing. However, when she may have broken a rule of Part 2 while in the zone around a mark other than a starting mark, her penalty shall be a Two-Turns Penalty."

16.2 Unless the course is shortened to finish at the windward mark, penalties within the zone of the windward mark or on the offset leg may be delayed and taken as soon as possible on the downwind leg.

16.3 The US Sailing prescriptions RRS Appendix T, Section B will apply.

16.4 Penalty declarations - A boat that has taken a penalty turn(s) in accordance with SI 16.1 shall complete the penalty declaration form available outside the scoring office before the end of protest time limit. A boat wishing to take a post-race penalty in accordance with SI 16.3 or wishes to retire after finishing shall complete the penalty declaration form available outside the scoring office.

17 TIME LIMITS AND TARGET TIMES

17.1 The target time for races is 45 to 60 minutes. Failure to meet the target time will not be grounds for granting redress. This changes RRS 62.1(a)

17.2 Boats still racing more than 30 minutes after the first boat to sail the course in accordance with RRS 28.1 finishes will be scored TLE (Time Limit Expired) without a hearing (see Scoring). This changes RRS 35, 63.1, A4.2, and A5.

18 PROTESTS AND REQUEST FOR REDRESS

18.1 A boat intending to protest shall comply with RRS 61 and additionally report to the race committee (signal boat or finish boat) as soon as possible after finishing, giving the race committee its sail or bow number and the sail or bow number(s) of the protested boat(s). This changes RRS 61.

18.2 Protest forms are available at the protest committee room, located in the Charleston Harbor Resort. Protests and requests for redress or reopening shall be delivered there within the appropriate time limit.

18.3 Protest Time Limit: Will begin when the race committee finish boat of the appropriate circle or course docks and ends sixty minutes later. The race committee will make the number of sound signals corresponding to its circle number upon docking and post the docking time on the official notice board. This posting constitutes the notice required by RRS 61.1(b) and 63.2 (Time and Place of the Hearing.)

18.4 Notices of scheduled protests or requests for redress hearings will be posted on the official notice board within 15 minutes of the protest time limit to inform competitors of hearings in which they are parties or may be parties affected by a request for redress.

18.5 Protests will be heard approximately in order of posting as soon as possible in the protest room.

18.6 For the purpose of RRS 64.3(b) the "authority responsible" is the measurer appointed by the organizing authority (Charleston Ocean Racing Association).

18.7 Notices of protests by the race committee or protest committee will be posted to inform boats under RRS 61.1(b).

18.8 Breaches of instructions 11.3, 16.4, 21, 24, 25, 26, 27 and 28 will not be grounds for protest by a boat. This changes rule 60.1(a). Penalties for these breaches may be less than disqualification if the protest committee so decides.

18.9 On the the last scheduled day of racing a request for reopening a hearing shall be delivered:

(a.) within the protest time limit if the requesting party was informed of the decision on the previous day;

(b.) no later than 30 minutes after the requesting party was informed of the decision on that day. This changes RSS 66.

18.10 On last scheduled day of racing a request for redress based on a protest committee decision shall be delivered no later than 30 minutes after the decision was posted. This changes rule 62.2.

18.11 If the race committee posts a list of boats scored OCS, ZFP or BFD on the official notice board before the protest time limit, a request for redress based on such a posted score shall be made no later than one hour after the protest time limit. This changes RRS 62.2.

19 PROTEST ARBITRATION

19.1 The US Sailing prescription RRS Appendix T, Section D will apply.

20 SCORING

20.1 (a) When fewer than six (6) races have been completed, a boat's series score will be the total of its race scores. This changes RRS A2. (b) When six(6) or more races have been completed, a boat's series score will be the total of its scores excluding its worst score.

(c) For the J/70 fleet, a boat's series score will be the total of its race scores. This changes RRS A2.

20.2 Boats scored TLE will be scored points equal to the number of boats finishing within the time limit plus two points by the race committee without a hearing. The total shall not exceed the total number of boats in that class. This changes RRS A4.1, A4.2, & A5.

20.3 If a boat requesting redress for OCS is not granted redress, the score in that race shall not be excluded. This changes SI 20.1(b), RRS 90.3 and A2.

21 SAFETY

21.1 Each competitor is solely responsible for his own safety and, by participation, agrees to sail and use Charleston Harbor Resort and Marina facilities at his or her own risk. The Charleston Ocean Racing Association nor persons assisting with the conduct of races shall be responsible for damage or injury suffered during races or related activities.

21.2 A boat that retires from a race, leaves the course area or returns to the course area between races shall notify the race committee as soon as possible.

21.3 A boat and its crew shall at all times keep clear of all commercial vessels and shall not maneuver in any manner which would cause a commercial vessel to be unable to sail its proper course or carry out its commercial functions in a normal manner.

a.) A boat whose actions or maneuvers result in danger signal (5 or more Blasts) from commercial vessels shall be protested.

b.) The penalty for breaking this rule shall be disqualification from the entire regatta.

21.4 There will be a courtesy announcement on each circle's designated VHF channel each morning and at the end of the day's racing to communicate expected commercial traffic needs to the fleets. Boats are reminded that Charleston Harbor and its approaches have a high level of commercial traffic.

22 REPLACEMENT OF CREW OR EQUIPMENT

22.1 Substitution of competitors will not be allowed without prior written approval of the race committee.

22.2 The number of crew shall not change during the regatta, unless permitted by the Regatta Chairman in accordance with NOR 4.1.

23 EQUIPMENT AND MEASUREMENT CHECKS

23.1 A boat or equipment may be inspected at any time for compliance with the class rules and sailing instructions. On the water, a boat can be instructed by a race committee equipment inspector or measurer to proceed immediately to a designated area for inspection.

24 EVENT ADVERTISING

24.1 Event bow stickers shall be attached to both sides of the boat's hull at all times while racing. The event stickers are to be mounted aft of the bow numbers. Boats failing to display bow numbers and event bow stickers may be subject to protest by the race committee only. The protest committee may impose a penalty as it deems appropriate. This changes RRS 60.1 (a).

25 SUPPORT BOATS

25.1 Support boats shall register at the registration desk.

25.2 Support boats shall be marked by a pennant supplied by the race committee and remain no less than 150 yards from the race course from preparatory signal until all boats have finished or retired or the race committee signals postponement, general recall or abandonment.

25.3 Failure of a support to register, or a breach of SI25.2 shall be considered a breach of RRS2 (Fair Sailing), by the boats associated with support, and is subject to protest. The penalty applied to the boat or boats associated with the support boat shall be at the discretion of the protest committee and shall not be excluded from their score. This changes RRS 64.1(c) and A2.

25.4 Support boats shall carry a VHF radio tuned to the designated race committee VHF channel for the circle they are nearest to.

25.5 Support drivers shall have valid third-party liability insurance or the equivalent and provide proof upon request by the race committee or organizing authority.

26 HAUL OUT

26.1 Boats shall not be hauled during the regatta except with and according to the terms of prior written permission of the Race Director.

27 PRESS AND SPECTATOR BOATS

27.1 All press and official spectator boats shall be registered with the race organizers during registration. Press and official spectator boats shall monitor the designated VHF channel for the course they are on.

27.2 Press and spectator boats shall not interfere with the racing, in any way and shall stay no less than 150 feet distance from any boat that is racing and on the outside of the race course where as defined by the location of the rounding marks at a distance outside the racecourse where their wake causes no problem.

27.3 The organizers may appoint one or more photo boats, which will be allowed within the race course. The position of these boats shall not be grounds for redress.

27.4 Press and spectator boats shall display a flag, or other identification symbol as may be required by the race committee.

28 RADIO COMMUNICATION

28.1 The race committee will broadcast its intentions for racing that day on the designated VHF Channel at 0930 and again at 1000.

28.2 A designated observer may report visual signals displayed by the race committee over VHF Channel 66 for Circle 1, 69 for Circle 2 and VHF Channel 71 for Circle 3. Information reported by the designated observer is provided as a courtesy to competitors and does not in any way alter the competitors' responsibility to observe the race committee's visual signals which govern the conduct of the racing. Errors or omissions on the part of the designated observer will not be grounds for requesting redress.

28.3 All boats shall carry an operating VHF radio.

29 PRIZES

29.1 One daily trophy will be awarded in each class for each day of racing. One overall trophy will be awarded in each class for every three boats entered up to a maximum of three trophies per class. The entry that wins the most competitive class will receive recognition on the Charleston Race Week Cup Perpetual Trophy.

29.2 Jubilee Sportsmanship Perpetual Trophy will be awarded to the participant who has displayed outstanding example of good sportsmanship during Sperry Charleston Race Week.

29.3 The organizing authority may award additional prizes at their discretion.

30. DISCLAIMER OF LIABILITY

30.1 Competitors participate in the regatta entirely at their own risk. (See RRS4, Decision to race). The Organizing Authority will not accept any liability for material damage or personal injury or death sustained in conjunction with or prior to, during, or after the regatta.

30.2 The safety of a boat and its crew is the sole and inescapable responsibility of the Skipper who shall ensure that the boat is fully sound, thoroughly seaworthy, and manned by an experienced and physically able crew. Neither the establishment of regulations or inspection of a boat in any way limits or reduces the complete and unlimited responsibility of the Skipper.

30.3 Charleston Ocean Racing Association, Sponsors of the Sperry Charleston Race Week, and their employees and volunteers do not accept responsibility for the loss of life or injury to participants or others, or for the loss or damage to any vessel in any way or from any cause during or relating to this event.

30.4 The Skipper shall be responsible for the conduct of his crew. In the event of a serious breach of conduct, the destruction of property or the failure to comply with a reasonable request of any Race Officer or Committee Member, the Skipper will be responsible for all damages and the boat may be subject to protest which, may include disqualification from the regatta.

31 INSURANCE

31.1 Each participating boat shall be insured with valid third-party liability insurance with a minimum coverage of \$300,000 (USD) per event or the equivalent.

32 INSHORE RACE OFFICIALS

Event Director/Race Director: Randy Draftz

rdraftz@charlestonyachting.com

Circle One PRO: Tommy Harken

tharken@comcast.net

Circle Two PRO: Hank Stuart

hstuart8m@gmail.com

Circle Three PRO: Hal Smith

hal_smith@mindspring.com

Chief Judge: Sarah Ashton

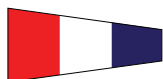
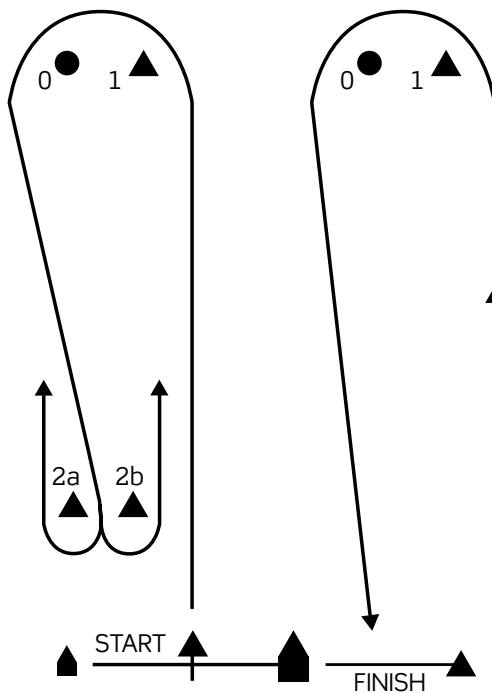
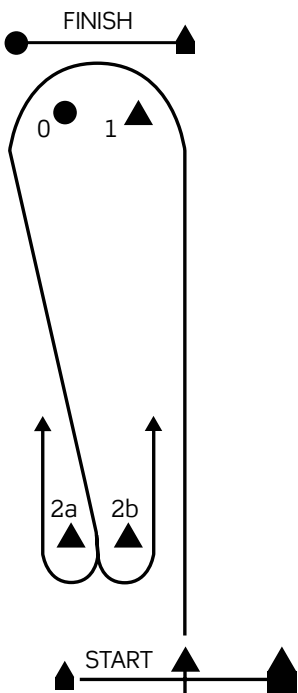
ashtonsh1@me.com

INSHORE RACE COURSES CIRCLES 1,2&3 • ILLUSTRATION B

The courses sailed shown in the diagrams below apply to the courses sailed on the inshore course. The leeward gate (mark 2 a/b) may be adjusted at the discretion of the Race Committee to keep the course square without further signals.

Course 3 and 5 are Windward-Leeward with a finish to Windward.

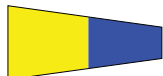
Course 4 and 6 are Windward-Leeward with a finish to Leeward.



Course 3: 3 Legs
Marks: S - 1 - 0 - 2a/b - F



Course 4: 4 Legs
Marks: S - 1 - 0 - 2a/b - 1 - 0 - F

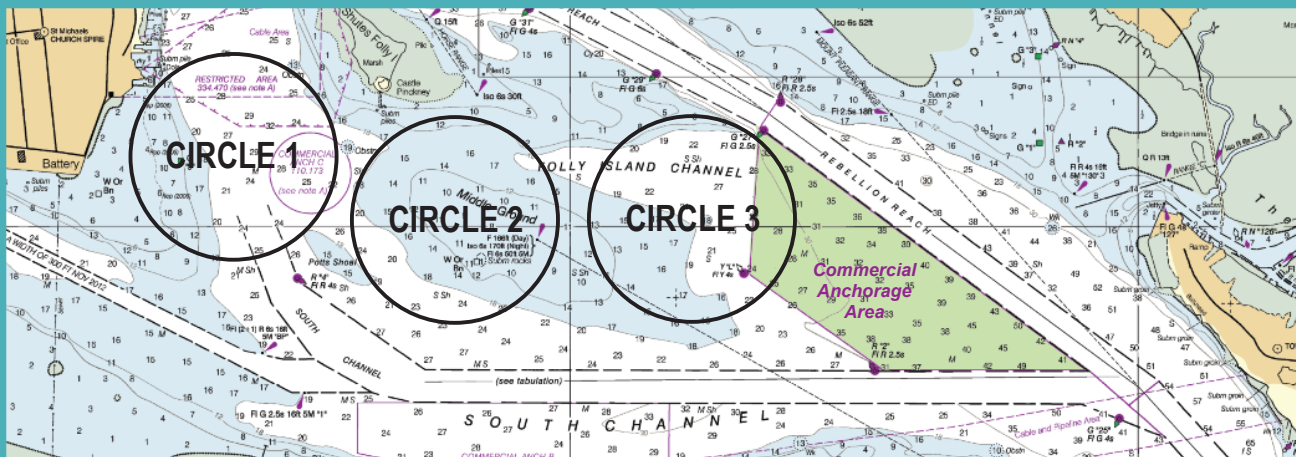


Course 5: 5 Legs
Marks: S - 1 - 0 - 2a/b - 1 - 0 - 2a/b - F



Course 6: 6 Legs
Marks: S - 1 - 0 - 2a/b - 1 - 0 - 2a/b - 1 - 0 - F

CIRCLE LOCATIONS



SAILING INSTRUCTIONS

OFFSHORE CIRCLES 4 & 5

2015 Sperry Charleston Race Week - April 16-19, 2015

Organizing Authority: Charleston Ocean Racing Association

1 RULES

- 1.1 The regatta will be governed by the rules as defined in *The Racing Rules of Sailing*.
- 1.2 The 2015 HPR, ORR, IRC, and the PHRF Rules and Regulations as adopted and amended by the CORA PHRF Policies and Procedures will apply.
- 1.3 US Sailing Prescriptions to RRS 60, 63.2, and 63.4 will not apply.
- 1.4 The protest committee may impose suitable penalties, other than disqualification, for violations of the Class Rules, or other non Part 2 rules. This changes RRS 64.1.
- 1.5 The Equipment Rules of Sailing will apply.
- 1.6 J/111 Class Rule C.3.3 regarding crew weight will be waived. In addition, the maximum number of crew shall be eight (8) with no weight restriction.
- 1.7 If there is a conflict between languages the English text will take precedence.

2 NOTICES TO COMPETITORS

- 2.1 Notices to competitors will be posted on the official notice board located in the Race Village at Charleston Harbor Resort and Marina (CHRM).
- 2.2 When flag "L" is displayed alone ashore, a notice affecting all competitors has been posted. When flag "L" is displayed over a numeral pennant(s), the notice applies only to those sailing on the circle(s) corresponding to the numeral pennant(s) displayed.
- 2.3 Any questions concerning the Notice of Race, these sailing instructions, scoring, or any other issue shall be submitted in writing to Race Week Headquarters on the forms provided. Forms for submittal will be available there. All written inquiries and responses will be posted on the official notice board.

3 CHANGES IN THE SAILING INSTRUCTIONS

- 3.1 Any shore side change in the Sailing Instructions will be posted on the official notice board before 0700 on the day it will take effect, except that any change to the schedule of races will be posted by the end of protest time on the day before it will take place. The "L" flag will be displayed with numeral pennant and class flag, if applicable.
- 3.2 For an on the water change to the sailing instructions: "L" flag, displayed with numeral pennant and class flag, if appropriate, will be displayed from the race committee signal boat while anchored. The change will be announced on the designated VHF channel. This changes RRS 90.2 and Race Signals.

4 SIGNALS MADE ASHORE

- 4.1 Signals made ashore will be displayed on the flagpole located on the dock outside the marina office.
- 4.2 When flag "AP" is displayed ashore, the warning signal for the first start will be signaled not less than 60 minutes after "AP" is lowered. This changes RRS Race Signals.
- 4.3 The race committee will broadcast its intent on the designated VHF channel at 0800 and again at 0830.

5 SCHEDULE OF RACES & EVENTS

5.1 Thursday, April 16

- 1200-1700 Registration
1200-1400 Circle 3 - Informal Practice Starts offered by Quantum for Audi Melges 20, Melges 24, and Vipers on VHF 71

- 1400-1600 Circle - 2 Informal Practice Starts offered by Quantum for J70's on VHF 69
1700-1800 Skippers Meeting (Pavilion)
1800 Local Knowledge Talk - Mitch Hall & Ed Baird (Main stage)
1900 Brian Carlin Replays his Vestas Wind's grounding
1800-2100 Opening Beach Party, Gosling's Rum, Tacos, Wine Tasting, Live Music

Friday, April 17

- 0730 US Sailing Espresso Bar
0830 Harbor Start for offshore circles 4 & 5
0930 Pursuit Class - first warning signal
1030 Offshore (Circles 4 & 5) - first warning signal
1100 Inshore (Circles 1, 2 & 3) - first warning signal
1800 Friday debrief by Ed Baird with video by Keith Brash presented by Quantum
1800-2100 Daily Awards, Beach Party, Beach Buffet, Goslings Rum, Beer Bar, Wine Tasting, Live Music

Saturday, April 18

- 0730 US Sailing Espresso Bar
0830 Harbor Start for offshore circles 4 & 5
0930 Pursuit Class - first warning signal
1030 Offshore (Circles 4 & 5) - first warning signal
1100 Inshore (Circles 1, 2 & 3) - first warning signal
1700-1900 SCRW Owner's Reception presented by Quantum
1800 Saturday debrief by Ed Baird with video by Keith Brash presented by Quantum
1900 America's Cup 35 Update by Tucker Thompson and Andrew Campbell (Main Stage)
1800-2100 Daily Awards, Beach Party, Goslings Rum, Beer Bar, Wine Tasting, Video DJ

Sunday, April 19

- 0730 US Sailing Espresso Bar
0830 Harbor Start for offshore circles 4 & 5
0930 Pursuit Class - first warning signal
1030 Offshore (Circles 4 & 5) - first warning signal
1100 Inshore (Circles 1, 2 & 3) - first warning signal
1400-1800 Beach Party
1530 Sunday debrief by Ed Baird with video by Keith Brash presented by Quantum

- 1600-1800 Awards Ceremony, Chili, Beer Bar, Wine Tasting
5.2 Eight (8) races are scheduled for all classes. One race for each class shall be completed to constitute a regatta for that class.

5.3 The race committee may run up to, but not more than, 3 races in a single day.

5.4 Races that are postponed or abandoned for the day may be re-sailed unless it is the final day of racing. No warning signal will be made after 1400 on Sunday April 19.

6 CLASS FLAGS, STICKERS, & SAIL NUMBERS

6.1 Class flag designations will be posted on the official notice board at Race Headquarters no later than 1800 on Thursday, April 16, 2015.

6.2 Event bow stickers shall be attached to both sides of the boats hull at all times while racing. The event stickers are to be mounted approximately 6-10 inches below deck level and 8-14 inches aft of the bow. Boats failing to display event bow stickers may be subject to protest by the race committee only. This changes RRS 60.1 (a).

6.3 Boats shall display the appropriate class flag from the backstay at least 5 feet above the deck. Flags are available in the skipper's packages.

6.4 All boats shall display only the sail numbers under which she has entered, unless prior written approval is obtained from the race committee and posted on the official notice board.

7 RACING AREA

7.1 The racing areas are shown in "Circle Locations" in Illustration C.

7.2 The racing area for Circle 4 will be offshore in the Atlantic Ocean on the north side of the entrance channel.

7.3 The racing area for Circle 5 will be offshore in the Atlantic Ocean on the south side of the entrance channel.

8 COURSES

8.1 The diagrams in Illustration C illustrate the courses, including the approximate angle between legs, the order in which the marks are to be passed, and the side on which a mark is to be left.

8.2 Numeral pennants will be displayed with the warning signal to signify the specific course for that start.

8.3 A placard with the letter "S" (Short Course) or "L" (Long Course) will be displayed to indicate the course is "Long" or "Short".

8.4 A placard will be displayed with the bearing of the weather mark.

8.5 If one of the leeward gate marks is missing and not replaced by a mark boat in its place displaying code flag "M" and making repetitive sounds, boats shall sail around the one existing leeward mark leaving it to port.

8.6 If the offset mark (o) is missing, boats should sail to the leeward mark (2 or 2A) after rounding mark 1L or 1S. This changes Rule 34.

8.7 There will be no offset mark for a changed weather mark.

9 MARKS

9.1 The marks for Circle 4 will be: Mark 1L is a yellow tetrahedron. Mark 1S is an orange tetrahedron. Marks 2a and 2b are orange tetrahedrons. Marks o1 and o2 (offset marks) are small, orange tetrahedrons. The starting marks will be race committee boats or an orange tetrahedron. The finishing marks will be race committee boats or an orange ball. New mark 1L is an orange cylinder with a black band. New mark 1S is a red cylinder with a black band.

9.2 The marks for Circle 5 will be: Mark 1L is a yellow tetrahedron. Mark 1S is an orange tetrahedron. Marks 2a and 2b are orange tetrahedrons. Marks o1 is a white ball and o2 (offset marks) is small, orange tetrahedron. The starting marks will be race committee boats or an orange tetrahedron. The finishing marks will be race committee boats or an orange ball. New mark 1L is an orange cylinder with a black band. New mark 1S is a red cylinder with a black band.

10 CHECK IN

10.1 Before the first warning signal of each day, all boats shall sail past the stern of the signal boat on starboard tack and check in by hailing their sail number. They shall continue to do so until their sail number is verbally acknowledged by the race committee. Attempts to check in over the designated VHF channel does not meet this requirement.

10.2 Boats failing to check in accordance with 10.1 will be given a scoring penalty equal to 20% of the number of boats entered in that class without a hearing. (This changes RRS A5). This will apply to each boat's first race of the day.

THE START

11.1 Races will be started using RRS 26.

11.2 The starting line will be between the staff displaying an orange flag on the RC signal boat on the starboard end of the starting line and the port end starting boat with orange flag or a starting mark.

11.2 Boats whose warning signal has not been made shall keep clear of the starting area. The starting area is defined as 100 yards in all directions from the starting line.

11.3 A boat starting later than 10 minutes after her starting signal will be scored Did Not Start (DNS) without a hearing. This changes RRS 63.1, A4.1 and A5.

12 RECALLS

12.1 As a courtesy, the race committee may identify recalled boats by broadcast over the designated VHF channel. Failure of a boat to hear her recall notification and the timing and order of such hails or failure to hail will not be grounds for granting redress.

13 CHANGE OF THE NEXT LEG OF THE COURSE

13.1 To change the next leg of the course, the race committee will lay a new mark (or move the finish line) and remove the original mark as soon as practicable. When in a subsequent change a new mark is replaced, it will be replaced by an original mark.

13.2 A signal board with the letters for the classes for which the change of course applies will be displayed along with flag "C". If no classes are displayed on a signal board, the change applies to all classes. This changes RRS Race Signals

13.3 The race committee may adjust the angle of a gate or offset mark without making any signals.

13.4 The race committee will attempt to broadcast any course changes over the designated VHF channel. Failure of a boat to hear such notification or failure to broadcast will not be grounds for granting redress.

14 THE FINISH

14.1 For downwind finishes, the finishing line will be on the opposite side of the signal boat from the starting line.

14.2 For downwind finishes, the finishing line will be between a staff displaying an orange flag on signal boat on the starboard end of the finish line and a staff displaying an orange flag on the port end finishing boat or finish mark.

14.3 For windward finishes, the finishing line will be between staffs displaying orange flags on two boats or between a staff displaying an orange flag on a starboard end boat and a finish mark.

14.4 The finishing boat will display the code flag "R" (with no sounds) at the finishing line if the race committee intends to start another race on the same day.

14.5 In the interest of starting another race in a timely fashion on multiple race days, the race committee may assign a finish position to the last finishers in a division (circle), provided that the positions can be determined in a reasonable manner.

15 PENALTY SYSTEM

15.1 The first two sentences of rule 44.1 are changed to: "A boat may take a One-Turn Penalty when it may have broken a rule of Part 2 or rule 31 while racing. However, when she may have broken a rule of Part 2 while in the zone around a mark other than a starting mark, her penalty shall be a Two-Turns Penalty."

15.2 Unless the course is shortened to finish at the windward be delayed and taken as soon as possible on the downwind leg.

15.3 Posts-race penalties. The US Sailing prescription RRS Appendix T, Section B will apply.

15.4 Penalty declarations - A boat that has taken a penalty turn(s) in accordance with SI 15.1 shall complete the penalty

declaration form available at the race/scoring desk before the end of protest time. A boat wishing to take a post-race penalty in accordance with SI 15.3 or wishes to retire after finishing shall complete the penalty declaration form available at the race/scoring desk.

16 TIME LIMIT

16.1 Boats still racing 30 minutes after the first boat in their class sails the proper course and finishes, and not thereafter retiring, will be scored TLE (Time Limit Expired, see Scoring). This changes RRS 35 and A11.

17 PROTESTS

17.1 A boat intending to protest shall comply with RRS 61 and additionally report to the race committee (signal boat or finish boat) as soon as possible after finishing, giving the race committee its sail number and the sail number(s) of the protested boat(s). Reporting should be done via VHF radio communications. This changes RRS 61.

17.2 Protests shall be written and lodged with the protest committee's representative within the protest time limit. Protest forms are available at the protest room in the Charleston Harbor Resort.

17.3 Protest Time Limit will begin when the race committee's finish boat of the appropriate circle or course docks and ends sixty minutes later. The race committee will make sound signals corresponding to its circle number upon docking and post the docking time on the official notice board. This posting constitutes the notice required by RRS 61.1(b) and 63.2 (Time and Place of the Hearing.)

17.4 Protests will be heard approximately in order of posting as soon as possible in the protest room.

17.5 Notices of scheduled protests or requests for redress hearings will be posted on the Official Notice Board within 15 minutes of the protest time limit to inform competitors of hearings in which they are parties or may be parties affected by a request for redress. This will constitute notice to all parties under RRS 63.2

17.6 For the purpose of rule 64.3(b), the "authority responsible" is the measurers appointed by Charleston Ocean Racing Association.

17.7 Breaches of instructions 11.3, 20, 22, 23, 24, and 25 will not be grounds for a protest by a boat. This changes rule 60.1(a). Penalties for these breaches may be less than disqualification if the protest committee so decides.

17.8 On the last scheduled day of racing, a request for reopening a hearing shall be delivered (a) within the protest time limit if the requesting party was informed of the decision on the previous day; (b) no later than 30 minutes after the party requesting was informed of the decision on that day. This changes RRS 66.

17.9 On the last scheduled day of racing, a request for redress based on protest committee decision will be delivered no later than 30 minutes after the decision was posted. This changes rule 62.2.

17.10 If the race committee posts a list of boats scored OCS, ZFP or BFD on the official notice board before the protest time limit, a request for redress based on such a posted score shall be made no later than one hour after the protest time limit. This changes RRS 62.2

18 PROTEST ARBITRATION

18.1 The US Sailing prescription RRS Appendix T, Section D will apply.

19 SCORING

19.1 (a) When 5 or fewer races have been completed, a boat's series score will be the total of her race scores. (b) When 6 races have been completed, a boat's series score will be the total of her race scores excluding her worst score.

19.2 Boats scored TLE will be scored points equal to the number of boats finishing within the time limit plus two points by the race committee without a hearing. The total shall not exceed the total number of boats in that class. This changes RRS A4.1, A4.2 and A5.

19.3 If a boat requesting redress for an OCS is not granted redress, the score in that race shall not be excluded. This changes SI 19.1(b), RRS 90.3 and A2.

20 SAFETY REGULATIONS

20.1 Each competitor is solely responsible for his own safety and, by participation, agrees to sail and use Charleston Harbor Resort and Marina facilities at his or her own risk. The Charleston Ocean Racing Association nor persons assisting with the conduct of races shall be responsible for damage or injury suffered during races or related activities.

20.2 A boat that retires from a race or leaves the course area between races shall notify the race committee before leaving the course area or immediately after arriving ashore on the designated VHF channel.

20.3 A boat and its crew shall at all times keep clear of all commercial vessels and shall not maneuver in any manner which would cause a commercial vessel to be unable to maneuver its proper course or carry out its commercial functions in a normal manner. a.) A boat whose actions or maneuvers result in danger signal (5 or more blasts) from commercial vessels shall be protested by the race committee. b.) The penalty for breaking this rule shall be disqualification from the entire regatta.

20.4 There will be a courtesy announcement on each circle's designated VHF channel each morning and at the end of the day's racing to communicate expected commercial traffic needs to the fleets. Boats are reminded that Charleston Harbor and its approaches have a high level of commercial traffic.

21 CREW WEIGH-IN / REPLACEMENT OF CREW / EQUIPMENT AND MEASUREMENT CHECKS

21.1 Boats shall sail with the same crew, as registered and conforming to any crew weight limitations, in all races unless prior written permission to change crew is granted by the Regatta Chairman. Weigh-in information is contained in the Notice of Race.

21.2 A boat or equipment may be inspected at any time for compliance with the class rules and sailing instructions. On the water, a boat can be instructed by a race committee equipment inspector or measurer to proceed immediately to a designated area for inspection.

22 COACH AND SUPPORT BOATS

22.1 Coach and support boats shall register with the race office during registration. They shall declare with which boat or boats they are associated.

22.2 Coach and support boats shall keep clear of the racing area from the time of the preparatory signal of each race until all boats have finished or the race committee signals a postponement, general recall, or abandonment.

22.3 The racing area is defined as no less than 50 yards (150 feet) distance from any boat that is racing and on the outside of the course as defined by the location of the rounding marks.

22.4 Any coach or support boat that infringes this rule will be warned by a member of the race committee. Failure to comply may result in the protest and disqualification of a racing boat associated with any offending support boat. This changes RRS 60.2.

22.5 Coach and support boats shall display a flag, or other identification symbol, as required by the race committee.

22.6 Coach and support boats shall not go alongside nor communicate with their associated boat until after the associated boat's race has finished.

23 PRESS AND SPECTATOR BOATS

23.1 All press and official spectator boats shall be registered with the race organizers during registration. Press and official spectator boats shall monitor the designated VHF channel for the course they are on.

23.2 Press and spectator boats shall not interfere with the racing, in any way and shall stay no less than 50 yards (150 feet) distance from any boat that is racing and on the outside of the race course where as defined by the location of the rounding marks at a distance outside the race course where their wake causes no problem.

23.3 The organizers may appoint one or more photo boats, which will be allowed within the race course. The position of these boats shall not be grounds for redress.

23.4 Press and spectator boats shall display a flag, or other identification symbol as may be required by the race committee.

24 HAUL-OUT RESTRICTIONS

24.1 Boats shall not be hauled out during the regatta except with and according to the terms of prior written permission of the Regatta Chairman.

25 RADIO COMMUNICATION

25.1 The designated VHF channel for Circle 4 will be channel 73.

25.2 The designated VHF channel for Circle 5 will be channel 77.

25.3 An observer designated by the race committee may report visual signals displayed by the race committee over the designated VHF channel. Information reported by the designated observer is provided as a courtesy to competitors and does not in any way alter the competitors' responsibility to observe the race committee's visual signals which govern the conduct of the racing. Errors or omissions on the part of the designated observer will not be grounds for requesting redress.

26 PRIZES

26.1 One daily trophy will be awarded in each class for each day of racing. One overall trophy will be awarded in each class. The entry that wins the most competitive class will receive recognition on the Palmetto Cup Perpetual Trophy.

26.2 Jubilee Sportsmanship Perpetual Trophy will be awarded to the participant who has displayed outstanding example of good sportsmanship during Sperry Charleston Race Week.

26.3 The Organizing Authority may award additional prizes at their discretion.

27 DISCLAIMER OF LIABILITY

27.1 Competitors participate in the regatta entirely at their own risk. (see RRS4, Decision to race). The Organizing Authority will not accept any liability for material damage or personal injury or death sustained in conjunction with or prior to, during, or after the regatta.

27.2 The safety of a boat and it's crew is the sole and inescapable responsibility of the Skipper who shall ensure that the boat is fully sound, thoroughly seaworthy, and manned by an experienced and physically able crew. Neither the establishment of regulations or inspection of a boat in any way limits or reduces the complete and unlimited responsibility of the Skipper.

27.3 Charleston Ocean Racing Association, Sponsors of the Sperry Charleston Race Week, and their employees and volunteers do not accept responsibility for the loss of life or injury to participants or others or for the loss or damage to any vessel in any way or from any cause during or relating to this event.

27.4 The Skipper shall be responsible for the conduct of his crew. In the event of a serious breach of conduct, the destruction of property or the failure to comply with a reasonable request of any Race Officer or Committee Member, the Skipper will be responsible for damages and the boat may be subject to protest which, may include disqualification from the regatta.

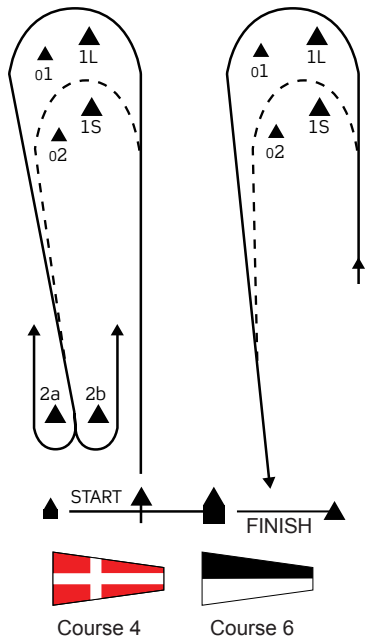
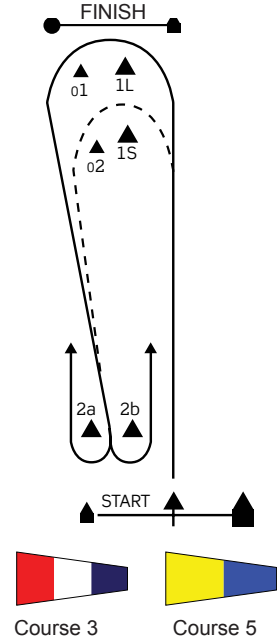
OFFSHORE RACE COURSES CIRCLES 4 & 5 • ILLUSTRATION C

The courses sailed shown in the diagrams below apply to the “Short” and “Long” courses. The rounding order for the “Short” courses shall be identical with the “Long” courses, except that yachts shall round marks 1L or 1S respectively. The starting and finishing lines shall be the same for both the long and short courses.

The leeward gate (mark 2 a/b) may be adjusted at the discretion of the Race Committee to keep the course square without further signals.

Course 3 and 5 are Windward-Leeward with a finish to Windward.

Course 4 and 6 are Windward-Leeward with a finish to Leeward.



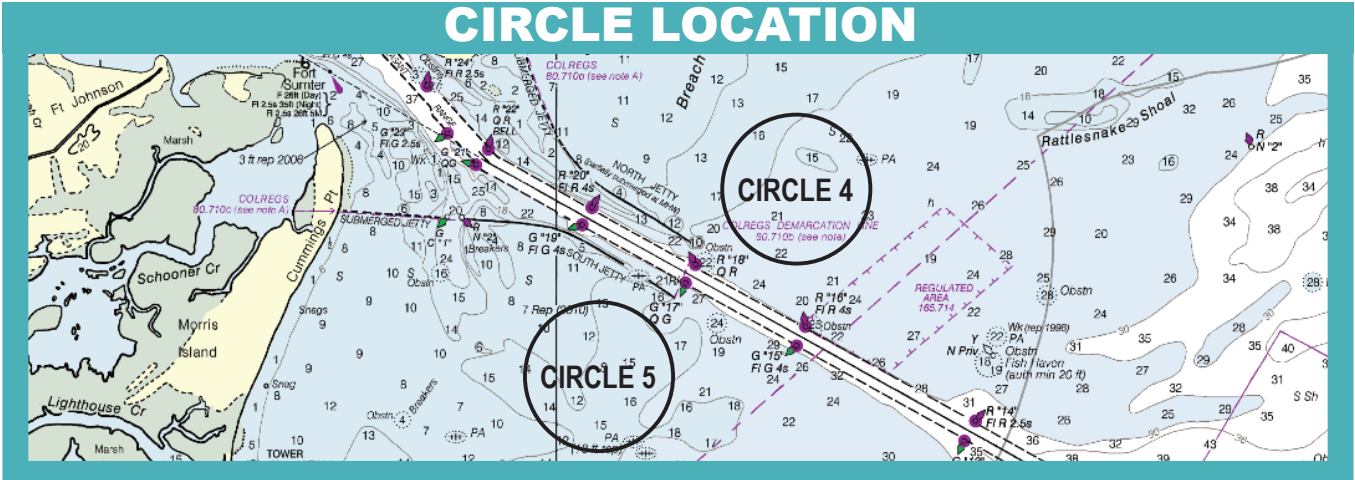
Course	Legs	Marks
3 (long)	3	S - 1L - o1 - 2 a/b - F
5 (long)	5	S - 1L - o1 - 2 a/b - 1L - o2 - 2 a/b - F
3 (short)	3	S - 1S - o2 - 2 a/b - F
5 (short)	5	S - 1S - o2 - 2 a/b - 1S - o2 - 2 a/b - F

Course	Legs	Marks
4 (long)	4	S - 1L - o1 - 2 a/b - 1L - o1 - F
6 (long)	6	S - 1L - o1 - 2 a/b - 1L - o1 - 2 a/b - 1L - o1 - F
4 (short)	4	S - 1S - o2 - 2 a/b - 1S - o2 - F
6 (short)	6	S - 1S - o2 - 2 a/b - 1S - o2 - 2 a/b - 1S - o2 - F

Course DL

A distance race course option may be offered on any one day of racing. The distance race will be the final race of the day and consist of the course described below. The course will be referred to as course “DL” and will be signaled on the course board on the signal boat and announced on the VHF radio. There will be no change in the scoring weight for the distance race course.

Course DL: S - 1L - o1 - 2a/2b - 1L - o1 - 2a/2b - Channel Buoys - R16/G15 - Channel Buoys - R22/G21 - R28/G27 - Finish
FINISH: The finish line will be in the area bounded by Rebellion Reach to the southwest and the access to the Mt. Pleasant Channel G”1” to the northeast and FL R “130” at the access to the ICW/Sullivan Island Narrows to the east.
 (Approximately 32°46.00N and 79°52.50W)



SAILING INSTRUCTIONS

PURSUIT CLASS

2015 Sperry Charleston Race Week - April 16-19, 2015

Organizing Authority: Charleston Ocean Racing Association

1 RULES

- 1.1 The regatta will be governed by the rules as defined in *The Racing Rules of Sailing*.
- 1.2 The PHRF Rules and Regulations as adopted and amended by the CORA PHRF Policies and Procedures will apply.
- 1.3 U S Sailing Prescriptions to RRS 60, 63.2 and 63.4 will not apply.

2 NOTICES TO COMPETITORS

- 2.1 Notices to competitors will be posted on the official notice board located in the Race Village at Charleston Harbor Resort and Marina (CHRM).
- 2.2 When flag "L" is displayed alone ashore, it means that a notice affecting all competitors has been posted. When flag "L" is displayed over a numeral pennant(s), it means that the notice applies only to those sailing on the circle(s) corresponding to the numeral pennant(s) displayed.
- 2.3 Any questions concerning the notice of race, these sailing instructions, scoring, or any other issue shall be submitted in writing to Race Week Headquarters on the forms provided. Forms for submittal will be available there. All written inquiries and responses will be posted on the official notice board.

3 CHANGES IN THE SAILING INSTRUCTIONS

- 3.1 Any shore side change in the sailing instructions will be posted on the official notice board before 0700 on the day it will take effect, except that any change to the schedule of races will be posted by the end of protest time on the day before it will take place. The "L" flag will be displayed with numeral pennant and class flag, if applicable.
- 3.2 For an on the water change to the sailing instructions: "L" flag shall be displayed with numeral pennant and class flag, if appropriate. The change will be announced on the designated VHF channel. This changes RRS Race Signals.

4 SIGNALS MADE ASHORE

- 4.1 Signals made ashore will be displayed on the flagpole located on the dock outside the marina office.
- 4.2 When flag "AP" is displayed ashore, the warning signal for the first start will be signaled not less than 60 minutes after "AP" is lowered. This changes RRS Race Signals.

5 SCHEDULE OF RACES & EVENTS

5.1 Thursday, April 16

- | | |
|-----------|--|
| 1200-1700 | Registration |
| 1200-1400 | Circle 3 - Informal Practice Starts offered by Quantum for Audi Melges 20, Melges 24, and Vipers on VHF 71 |
| 1400-1600 | Circle - 2 Informal Practice Starts offered by Quantum for J70's on VHF 69 |
| 1700-1800 | Skippers Meeting (Pavilion) |
| 1800 | Local Knowledge Talk - Mitch Hall & Ed Baird (Main stage) |
| 1900 | Brian Carlin Replays his Vestas Wind's grounding |
| 1800-2100 | Opening Beach Party, Gosling's Rum, Tacos, Wine Tasting, Live Music |

Friday, April 17

- | | |
|------|---|
| 0730 | US Sailing Espresso Bar |
| 0830 | Harbor Start for offshore circles 4 & 5 |
| 0930 | Pursuit Class - first warning signal |
| 1030 | Offshore (Circles 4 & 5) - first warning signal |
| 1100 | Inshore (Circles 1, 2 & 3) - first warning signal |

- | | |
|-----------|---|
| 1800 | Friday debrief by Ed Baird with video by Keith Brash presented by Quantum |
| 1800-2100 | Daily Awards, Beach Party, Beach Buffet, Goslings Rum, Beer Bar, Wine Tasting, Live Music |

Saturday, April 18

- | | |
|-----------|---|
| 0730 | US Sailing Espresso Bar |
| 0830 | Harbor Start for offshore circles 4 & 5 |
| 0930 | Pursuit Class - first warning signal |
| 1030 | Offshore (Circles 4 & 5) - first warning signal |
| 1100 | Inshore (Circles 1, 2 & 3) - first warning signal |
| 1700-1900 | SCRW Owner's Reception presented by Quantum |
| 1800 | Saturday debrief by Ed Baird with video by Keith Brash presented by Quantum |
| 1900 | America's Cup 35 Update by Tucker Thompson and Andrew Campbell (Main Stage) |
| 1800-2100 | Daily Awards, Beach Party, Goslings Rum, Beer Bar, Wine Tasting, Video DJ |

Sunday, April 19

- | | |
|-----------|---|
| 0730 | US Sailing Espresso Bar |
| 0830 | Harbor Start for offshore circles 4 & 5 |
| 0930 | Pursuit Class - first warning signal |
| 1030 | Offshore (Circles 4 & 5) - first warning signal |
| 1100 | Inshore (Circles 1, 2 & 3) - first warning signal |
| 1400-1800 | Beach Party |
| 1530 | Sunday debrief by Ed Baird with video by Keith Brash presented by Quantum |
| 1600-1800 | Awards Ceremony, Chili, Beer Bar, Wine Tasting |
- 5.2 Three (3) races are scheduled. One race shall be completed to constitute a regatta.
 - 5.3 No warning signal will be made after 1200 on Sun., April 19.

6 CLASS FLAGS, STICKERS, & SAIL NUMBERS

- 6.1 Class flag and fleet ribbon designations will be posted on the official notice board at Race Headquarters no later than 1800 on Thursday, April 16, 2015.
- 6.2 Boats shall display the appropriate class pennant and fleet ribbon from the backstay at least 5 feet above the deck. Class flags and fleet ribbons are available in the skipper's packages.

7 RACING AREA

- 7.1 The racing area will be Charleston Harbor and ocean as shown in attached diagram.

8 COURSES

- 8.1 The diagrams in Illustrations 'South' and 'North' illustrate the courses, including the approximate angle between legs, the order in which the marks are to be passed, and the side on which a mark is to be left.
- 8.2 The course to be sailed and the scheduled start time for each boat rating will be posted on the Regatta Notice Board no later than 1800 on the day prior to the scheduled race.
- 8.3 A placard showing the course to be sailed ("L" long or "S" short) will be displayed no later than the warning signal.

9 MARKS

9.1 The marks Course 'South' will be:

Start/finish mark is a yellow tetrahedron and a race committee boat. Mark 1 is an orange tetrahedron. Government marks: G25 and G13.

10 CHECK IN

10.1 Before the first warning signal of each day, a boat intending to race shall check in with the Race Committee via VHF radio channel 11. A boat shall continue to check in until it has been acknowledged by the Race Committee.

11 THE START

11.1 The starting area will be in the area bounded by Rebellion Reach to the southwest and the access to the Mt. Pleasant Channel "1" to the northeast and FL R "130" at the access to the ICW/Sullivan Island Narrows to the east. (Approximately 32°46.00N and 79°52.50W)

11.2 The starting line will be between a staff displaying an orange flag on a RC boat that is at the starboard end of the starting line and a yellow tetrahedron on the port end.

11.3 Boats will start according to their PHRF rating. This changes Rule 26.

11.4 RRS 26 is changed so that the starting signal is the signal for the first boat to start. All other boats will start afterwards based on their assigned starting time.

11.5 A boat starting later than 10 minutes after her starting signal will be scored Did Not Start (DNS) without a hearing. This changes RRS 63.1, A4.1 and A5.

12 RECALLS

12.1 RRS 29.1 (Individual Recall) is changed. No "X" flag will be used. The race committee will make a sound signal for all boats who are on the course side (OCS) at their start and notify them via VHF on the assigned channel. This changes RRS 29.1.

12.2 Failure of a boat to see or hear her recall notification and the timing and order of such hails or failure to hail will not be grounds for granting redress. This changes RRS 62.

13 CHANGE OF THE NEXT LEG OF THE COURSE

13.1 The course configuration will not be changed. However, the race committee may shorten course at any mark of the course.

14 THE FINISH

14.1 The finishing line will be in the vicinity of the starting area.

14.2 The finishing line will be between a staff displaying an orange flag on the RC boat at the port end and a yellow tetrahedron to starboard.

15 PENALTY SYSTEM

15.1 The scoring penalty, RRS 44.3 (20% penalty) will be the only penalty that applies for breaches of rules in part 2.

15.2 Boats that have taken a Scoring Penalty in accordance with RRS 44.3 may sign the alternative penalty form at the protest desk prior to the end of protest time limit in lieu of informing the race committee at the finish line. This changes RRS 44.3(a) and 44.3(b).

16 TIME LIMIT

16.1 All boats must finish by 1600. This changes RRS 35.

16.2 Boats still racing 30 minutes after the first boat in their fleet sails the proper course and finishes, and not thereafter retiring, will be scored TLE (Time Limit Expired, see Scoring). This changes RRS 35 and A11.

17 PROTESTS

17.1 A boat intending to protest shall comply with RRS 61 and additionally report to the race committee as soon as possible after finishing, giving the race committee its sail number and the sail number(s) of the protested boat(s). This changes RRS 61.

Reporting will be done via VHF radio.

17.2 Protests shall be written and lodged with the protest committee's representative within the protest time limit. Protest forms are available at the protest room in the Charleston Harbor Resort.

17.3 Protest Time Limit: Limit will begin when the race committee finish boat of the appropriate circle or course docks and ends sixty minutes later. The race committee will make sound signals corresponding to its circle number upon docking and post the docking time on the official notice board. This posting constitutes the notice required by RRS 61.1(b) and 63.2 (Time and Place of the Hearing.)

17.4 Protests will be heard approximately in order of posting as soon as possible in the protest room.

17.5 Notices of scheduled protests or requests for redress hearings will be posted on the Official Notice Board within 15 minutes of the protest time limit to inform competitors of hearings in which they are parties or may be parties affected by a request for redress. This will constitute notice to all parties under RRS 63.2 and its Prescription.

17.6 For the purpose of rule 64.3(b), the "authority responsible" is the measurers appointed by Charleston Ocean Racing Association.

17.7 On the last day of the regatta, a request for reopening a hearing shall be delivered (a) within the protest time limit if the requesting party was informed of the decision on the previous day; (b) no later than 30 minutes after the requesting party was informed of the decision on that day. This changes rule 66.

17.8 On the last scheduled day of racing, a request for redress based on a protest committee decision shall be delivered no later than 30 minutes after the decision was posted. This changes rule 62.2.

18 PROTEST ARBITRATION

18.1 The US Sailing prescription RRS Appendix T, Section D will apply. The penalty will be 40%.

19 SCORING

19.1 All races will be scored. This changes RRS A.2

19.2 If a boat requesting redress for an OCS is not granted redress, the score in that race shall not be excluded. This changes RRS 90.3 and A2.

20 SAFETY

20.1 Each competitor is solely responsible for his own safety and, by participation, agrees to sail and use Charleston Harbor Resort and Marina facilities at his or her own risk. The Charleston Ocean Racing Association nor persons assisting with the conduct of races shall be responsible for damage or injury suffered during races or related activities.

20.2 A boat that retires from a race or leaves the course area between races shall notify the race committee before leaving the course area or immediately after arriving ashore on the designated VHF channel.

20.3 A boat and its crew shall at all times keep clear of all commercial vessels and shall not maneuver in any manner which would cause a commercial vessel to be unable to maneuver its proper course or carry out its commercial functions in a normal manner.

a.) A boat whose actions or maneuvers result in danger signal (5 or more blasts) from commercial vessels shall be protested.

b.) The penalty for breaking this rule shall be disqualification from the entire regatta.

c.) If the wind velocity is low and it is apparent a boat cannot avoid an oncoming commercial boat, it may start its engine and motor away from the oncoming vessel at an angle of 90 degrees or less.

There shall be no forward movement on the course. It shall cut off its motor as soon as it is clear from the oncoming vessel.

20.4 There will be a courtesy announcement on the designated VHF channel each morning and at the end of the day's racing to communicate expected commercial traffic needs to the fleets. Boats are reminded that Charleston Harbor and its approaches have a high level of commercial traffic.

21. RADIO/TELEPHONE COMMUNICATIONS

21.1 All VHF communications and race committee announcements will be over VHF Channel 11.

21.2 Competitors may call the race committee via cell phone: 843-252-4900.

22. PRIZES

22.1 Prizes will be awarded as described in the notice of race.

23. DISCLAIMER OF LIABILITY

23.1 Competitors participate in the regatta entirely at their own risk. (See RRS4, Decision to race). The Organizing Authority will not accept any liability for material damage or personal injury or death sustained in conjunction with or prior to, during,

or after the regatta.

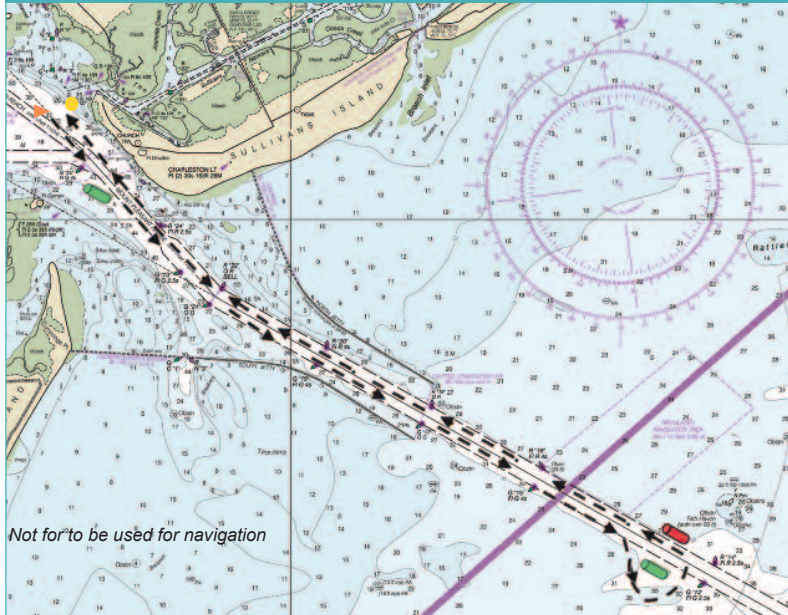
23.2 The safety of a boat and its crew is the sole and inescapable responsibility of the Skipper who shall ensure that the boat is fully sound, thoroughly seaworthy, and manned by an experienced and physically able crew. Neither the establishment of regulations or inspection of a boat in any way limits or reduces the complete and unlimited responsibility of the Skipper.

23.3 Charleston Ocean Racing Association, Sponsors of the Sperry Charleston Race Week, and their employees and volunteers do not accept responsibility for the loss of life or injury to participants or others, or for the loss or damage to any vessel in any way or from any cause during or relating to this event.

23.4 The Skipper shall be responsible for the conduct of his crew. In the event of a serious breach of conduct, the destruction of property or the failure to comply with a reasonable request of any Race Officer or Committee Member, the Skipper will be responsible for all damages and the boat may be subject to protest which, may include disqualification from the regatta.

PURSUIT RACE COURSES

“S” SHORT



COURSE: “S” (Short) - Approx. 18 NM

- | | |
|---------------|---|
| START | RC Boat with orange staff on starboard end and a yellow tetrahedron on port |
| G25 | STARBOARD thru Jettys |
| G13 | PORT thru Jettys |
| G25 | PORT |
| FINISH | RC Boats with an orange staff at port and yellow tetrahedron to starboard |

SOUTH COURSE “L” LONG



SOUTH COURSE: “L” (Long) - Approx. 22 NM

- | | |
|---------------|---|
| START | RC Boat with orange staff on starboard end and a yellow tetrahedron on port |
| Mark 1 | Orange tetrahedron |
| G25 | STARBOARD thru Jettys |
| G13 | STARBOARD |
| MARK 1 | PORT |
| G13 | PORT |
| G25 | PORT |
| FINISH | RC Boats with an orange staff at port and yellow tetrahedron to starboard |

Not for to be used for navigation